

Scenery - Words connected with landscape, scenery and the outdoors



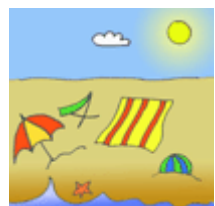
animal - zvíře
a living creature that moves and lives in water, on land etc.

ænimɪl



bay - zátoka, záliv
a place where the coast is curved inwards

bɛɪ



beach - pláž
the place at the seaside with sand, where you can lie, sunbathe, play etc.

bɪ:tʃ



cave - jeskyně
a hollow place inside a rock or under the ground

kɛɪv



city - město (velké), velkoměsto
a large town with many people

sɪti



cliff - útes, skála
the rocks that form the coast of a sea

klɪf



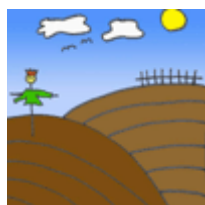
dam - přehrada, vodní nádrž
a strong wall that holds back the water in a river

dæm



desert - poušť, pustina
a dry piece of land usually covered with sand and no or almost no vegetation or life

dezət



field - pole
a large area of land where grains or vegetables are grown

fi:ld



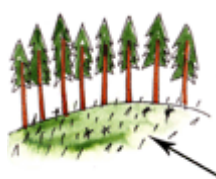
foothills - podhůří
lower hills on the base of higher mountains

fəʊhɪlz



forest - les, prales
a large area of land covered with trees

fɒrɪst



glade - paseka, mýtina
an open piece of land in a forest or wood

gleɪd



highway - dálnice, státní silnice, hlavní silnice
a wide road that connects cities, a road with more lanes where cars can drive at higher speeds

haɪweɪ



hill - kopec
a small and low mountain, a raised piece of ground

hɪl



island - ostrov
a piece of land in the middle of a sea, ocean, lake etc.

aɪlənd



lake - jezero, jezírko, rybník
a large area of water surrounded by land

leɪk



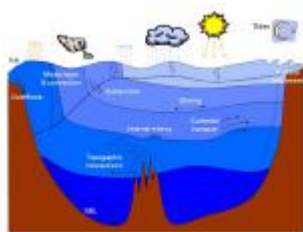
motorway - dálnice, silnice pro motorová vozidla
a wide road with more lanes where cars can drive at higher speeds

məʊtəweɪ



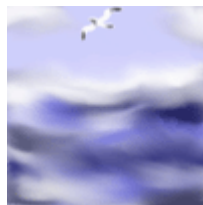
mountain - hora
a very high hill

maʊntɪn



ocean - oceán
a very large area of water, much bigger than a sea

əʊʃən



sea - moře
a large body of salty water, smaller and not as deep as an ocean

si:



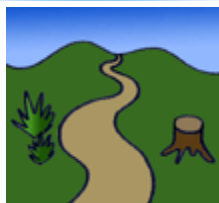
orchard - sad, ovocný sad
a place where trees with fruit are grown

ɔ:tʃəd



stream - potok, říčka
a narrow natural flow of water, a narrow river

stri:m



path - pěšina, cestička, cesta
a track for walking along

pɑ:θ



town - město
a place with many houses and buildings where people live, work etc., it is bigger than a village

taʊn



peninsula - poloostrov
a piece of land which is almost, but not completely, surrounded by water

pe'nɪnsjələ



tree - strom, stromek, stromeček
a very tall plant with a hard trunk and branches and green leaves or needles, people get wood from it

tri:



plain - planina, pláň, rovina
a large area of flat land

pleɪn



valley - údolí
the low place between hills or mountains

væli



pond - rybník, rybníček
a small lake

pɒnd



village - vesnice, ves
a place where people live smaller than a town, it usually has very few houses and almost no facilities

vɪlɪdʒ



range - pohoří
a line of mountains

reɪndʒ



volcano - vulkán, sopka
a mountain with a crater that can explode and throw burning rocks into the air, emit hot lava etc.

vəl'keɪnəʊ



river - řeka
a large stream of water that is flowing across the land into the sea

rɪvə



waterfall - vodopád
a place where water falls down from a rock or cliff

wɔ:təfɔ:l



road - silnice, cesta
the surface specially made for cars and lorries etc. to travel on, it is usually black with white lines

rəʊd



wood - les, lesík
a small forest, a place with many trees

wʊd